

Model: T2

# Parking Brake Kit

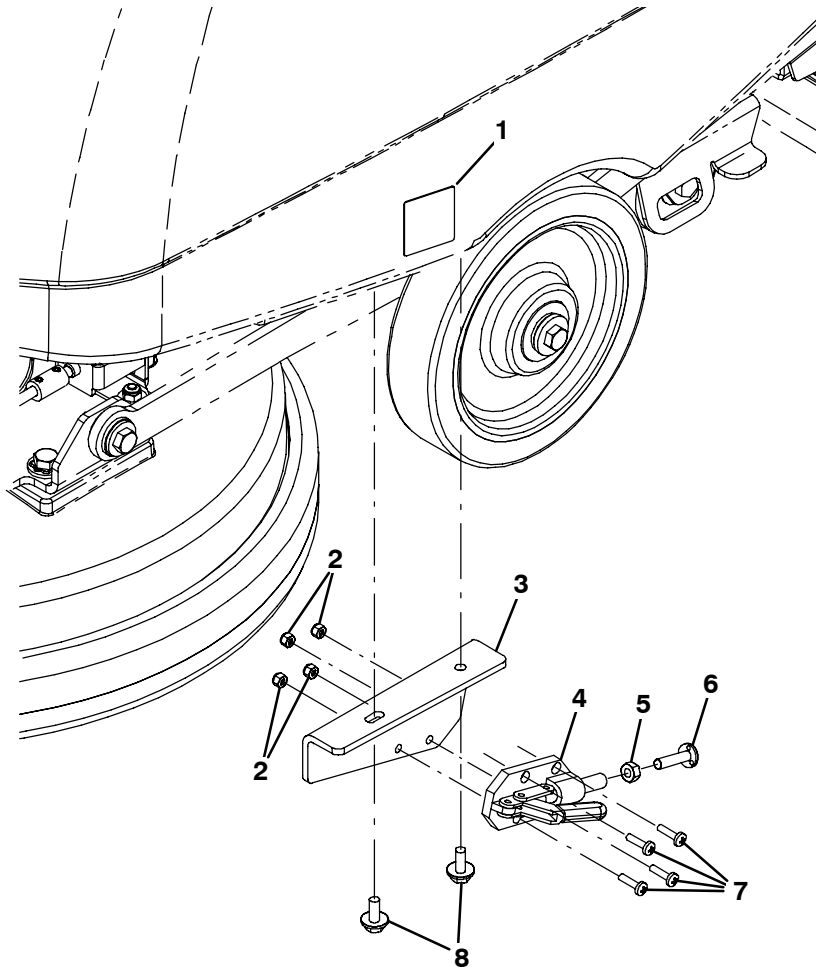


## INSTALLATION INSTRUCTIONS:

Installation Time: 0.5 Hour

**TOOL REQUIRED:** Phillips screwdriver, 7mm & 10mm hex wrench.

**FOR SAFETY:** Before installing kit, park machine on a level surface and remove key .



355093

## PARKING BRAKE KIT PARTS LIST

Ref.	Part No.	Description	Qty.
▽	9004855	Parking Brake Kit [T2]	1
▲	1	600624 Label, Parking Brake, Symbol [Tnv]	1
▲	2	33932 Nut, Hex, Lock, M4 X 0.70, NI, Ss	4
▲	3	1042770 Bracket, Mtg, Brake	1
▲	4	1013718 Clamp, Brake, Parking [T3]	1
▲	5	07785 Nut, Hex, Std, M6 X 1.00, Ss	1
▲	6	1017416 Screw, Weld, M6 X 1.00 X 25, Thru, Ss	1
▲	7	24265 Screw, Pan, Phl, M4 X 0.70 X 16, Ss	4
▲	8	1034731 Screw, Hex, M6 X 1.00 X 16, Ss, Sems	2

▽ ASSEMBLY

▲ INCLUDED IN ASSEMBLY